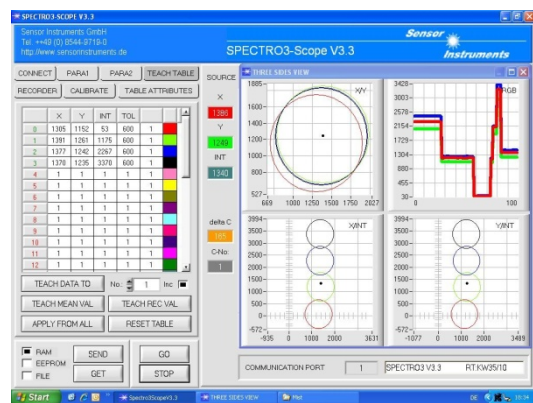
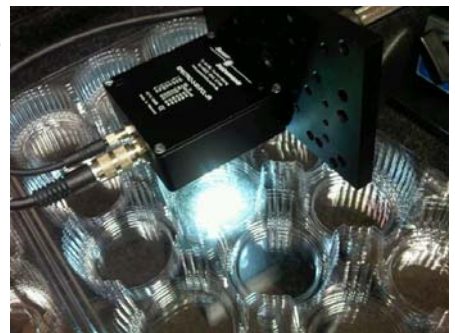


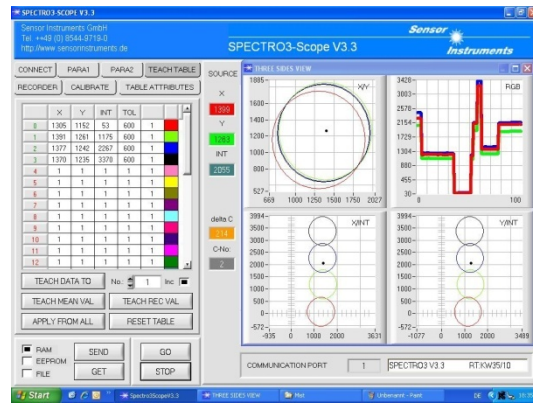
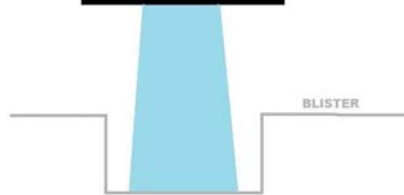


1. Double transparency film control

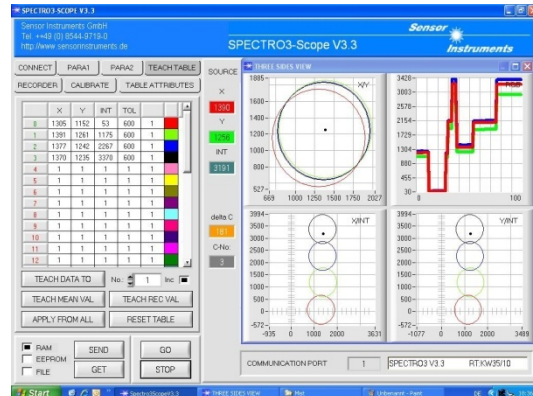
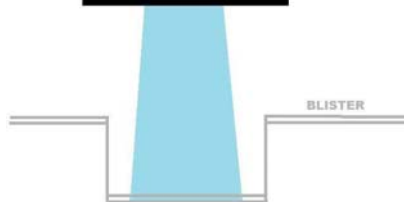
The presence of a transparent blister foil should be controlled with a reflective sensor system. Furthermore it must be distinguished between one, two or three blisters. For this task a **SPECTRO-3-50-FCL-JR** is used. The sensor is directed perpendicular onto the foil and looks into a recess, thus a part of the white light will be reflected back to the sensor. As more blisters are present as higher the signal. Due to this effect a proper differentiation between one, two or even three blisters is possible.



SPECTRO-3-50-FCL-JR



SPECTRO-3-50-FCL-JR



SPECTRO-3-50-FCL-JR

