

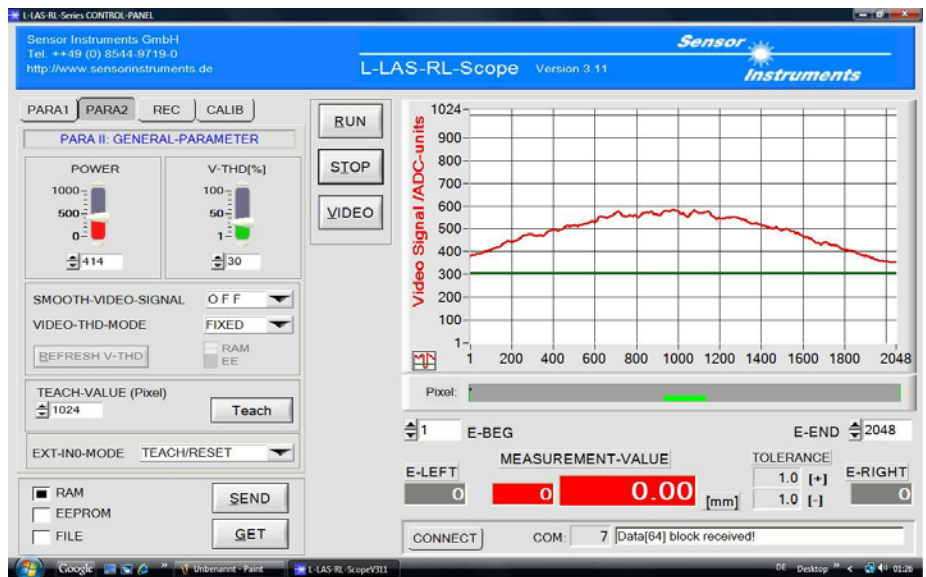
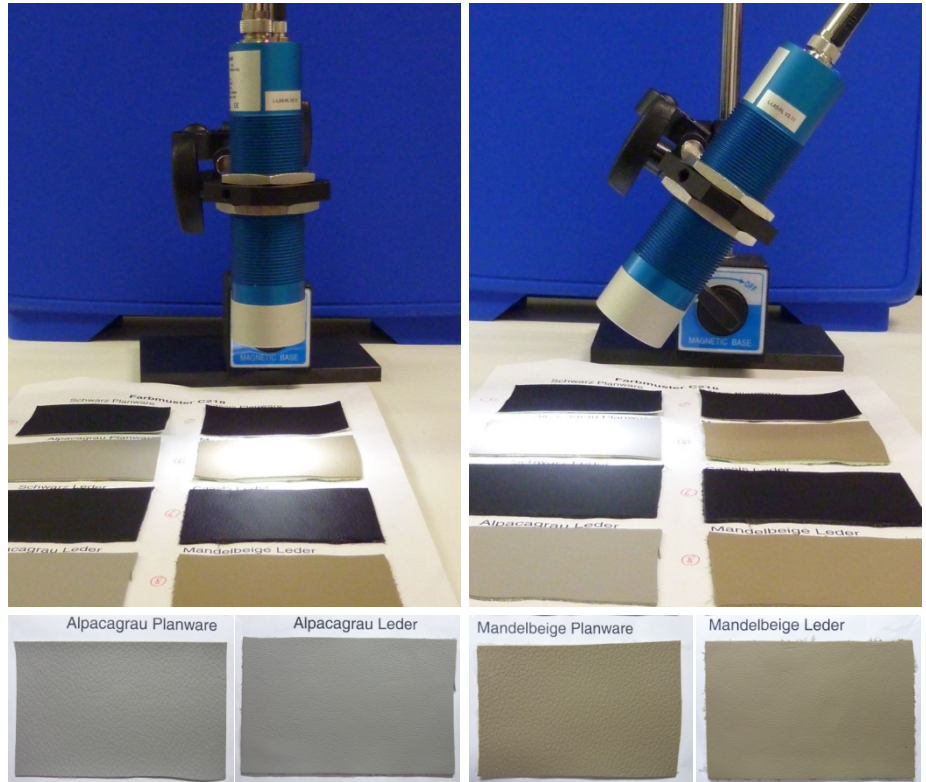


1. Differentiation of leather and leather imitations in the automotive interior field

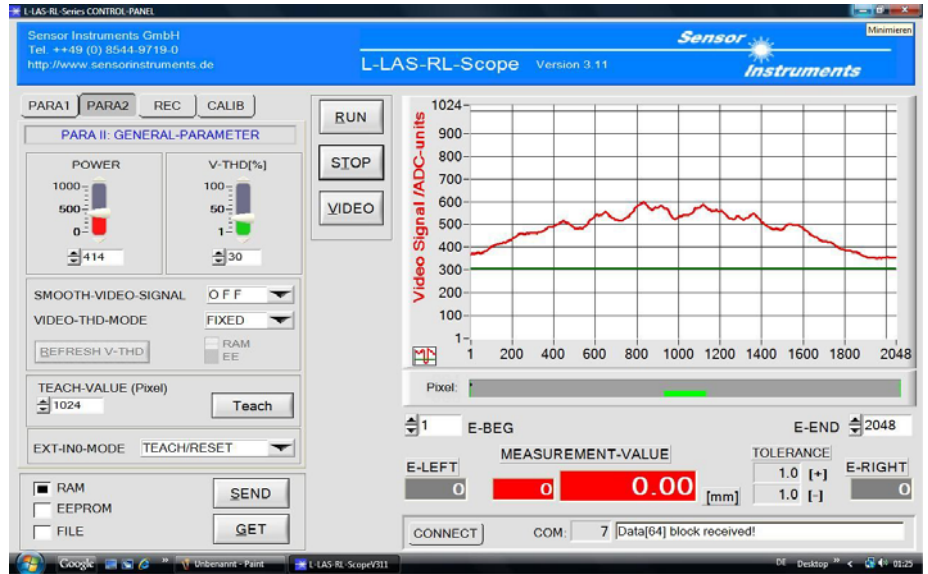
Sometimes a color differentiation between interior materials with exactly the same color and the same gloss factor is not possible, even with the best color sensor. Thus another sensor must close this gap.

Indeed the different materials may have the same color and the same gloss, but a different structure as shown in the photos. These structures can be detected with a line scan detector type **L-LAS-RL-20-W**. At a distance of 55 mm and 30° inclined, the sensor detects a range of 20 mm. The screenshots shows different signals for the leather and the leather imitation materials.

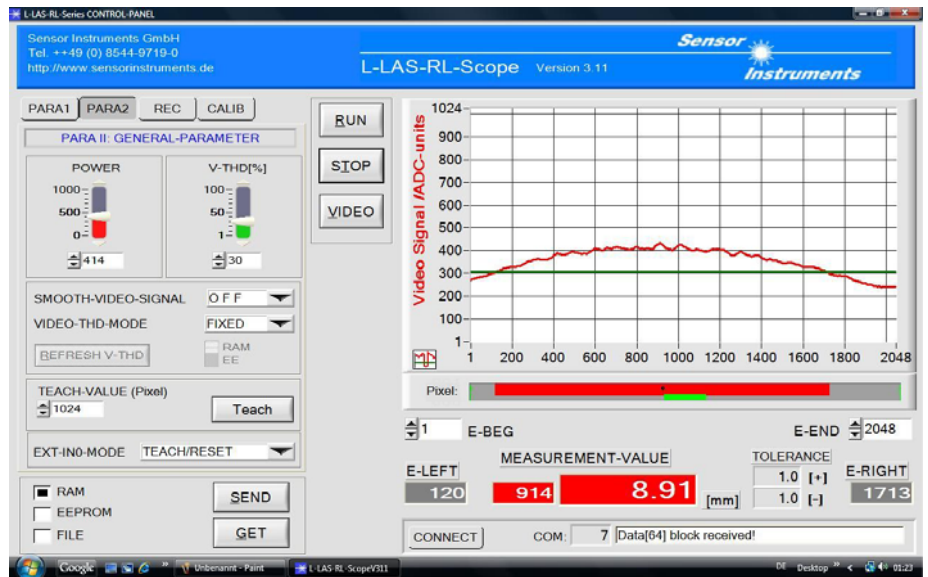
With an appropriate evaluation method the signals delivers a good result to guarantee a proper detection of the leather and the leather imitation materials.



Alpacagrau Planware



Mandelbeige Leder



Mandelbeige Planware

