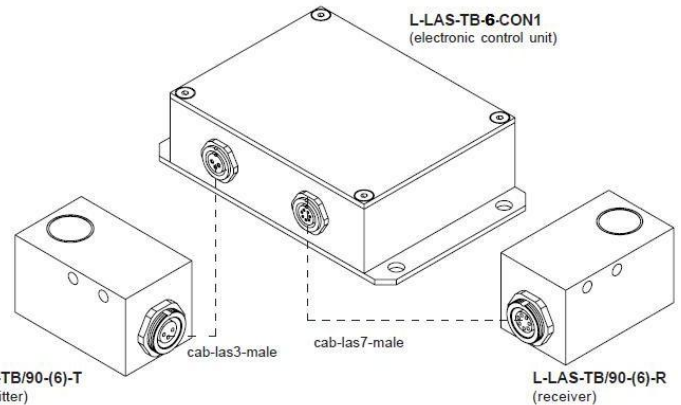
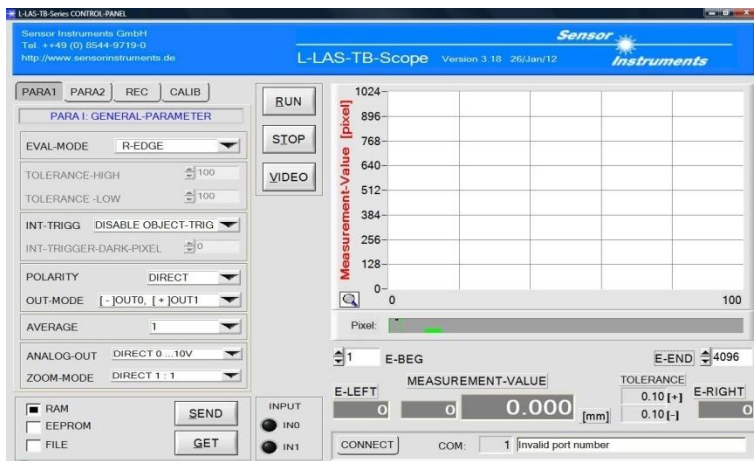
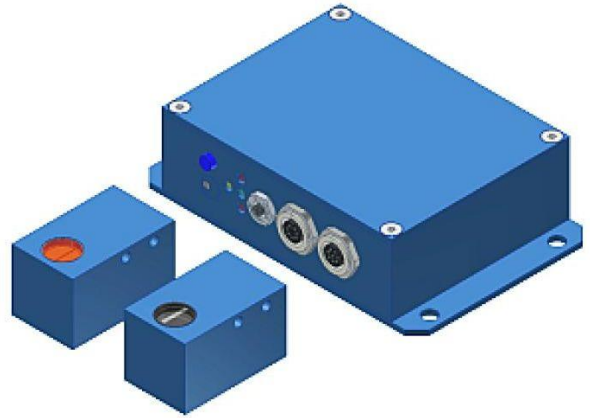


1. Laser through beam sensor type:

L-LAS-TB-6-CON1 + L-LAS-TB/90-6x1-T + L-LAS-TB/90-6x1-R

The L-LAS-TB-6 system is a laser trough beam system with a transmitter (L-LAS-TB/90-6x1-T) and receiver (L-LAS-TB/90-6x1-R) frontend. The frontends are connected to the L-LAS-TB-6-CON1 control electronics. The control electronics comes with an analog output 0V...+10V or optionally L-LAS-TB-6-CON1-4/20 with a 4mA...20mA output. The scan frequency is around 600Hz, the measurement range is 6.4mm and the resolution is approximately 2µm.

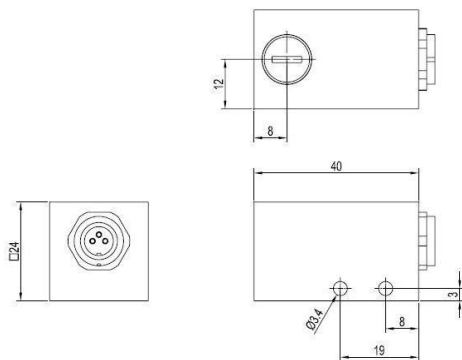


L-LAS-TB/90-6x1-T or
L-LAS-TB/90-1x6-T

L-LAS-TB/90-(6)-T
(transmitter)

L-LAS-TB/90-(6)-R
(receiver)

L-LAS-TB-6-CON1



L-LAS-TB/90-6x1-R or
L-LAS-TB/90-1x6-R

