

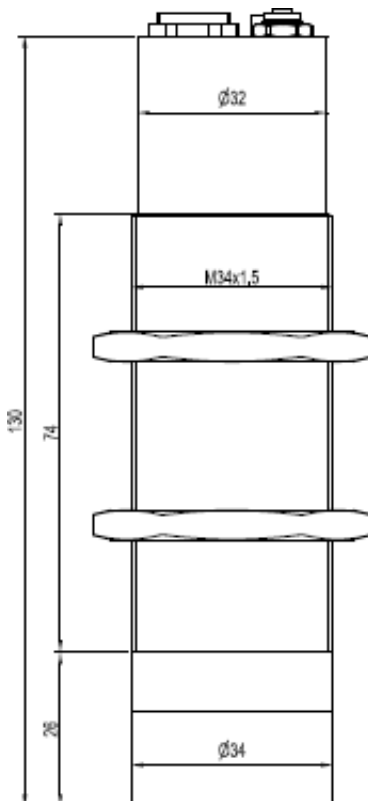
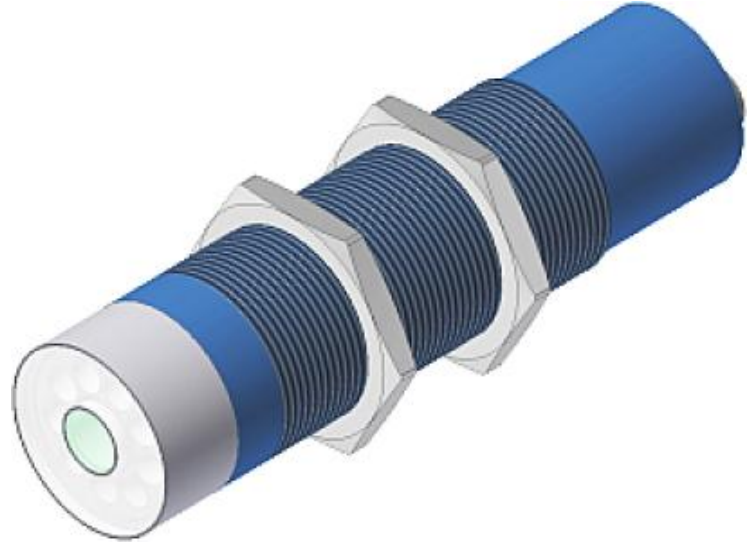
1. Color sensor type SPECTRO-3-30-...-MSM-DIG

The color sensor type **SPECTRO-3-30-...-MSM-DIG**

comes with the following optical heads:

-DIF, -DIL, -DIL-d5, -FCL, -FCL-d5, -POL,
-POL-d5, -UV, -UV-10x1

- SPECTRO-3-30-DIF-MSM-DIG
- SPECTRO-3-30-DIL-MSM-DIG
- SPECTRO-3-30-DIL-d5-MSM-DIG
- SPECTRO-3-30-FCL-MSM-DIG
- SPECTRO-3-30-FCL-d5-MSM-DIG
- SPECTRO-3-30-POL-MSM-DIG
- SPECTRO-3-30-POL-d5-MSM-DIG
- SPECTRO-3-30-UV-MSM-DIG
- SPECTRO-3-30-UV-10x1-MSM-DIG



Furthermore, the color sensors from the SPECTRO-3-...-MSM-DIG series delivers **xyY**, **L*a*b***, **L*u*v***, **L'u'v'**, **L*C*h*** color spaces.

Due to the presence of 5 digital outputs, **31 color space triples** can be taught and displayed. In using the COLOR GROUPS mode in connection with the digital serial bus, up to **64 color space triples** can be taught and displayed.

