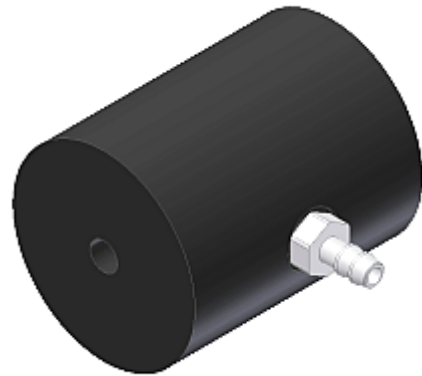


# Accessories

## ▶ ABL-M12-...

Blast-air top part for sensors or  
add-on optics for optical fibers in M12 housing

- Blast air connector (barbed fitting)
- Two different air exit openings available:  
Ø 3 mm or Ø 10 mm
- Sturdy material (aluminum, anodized in black)



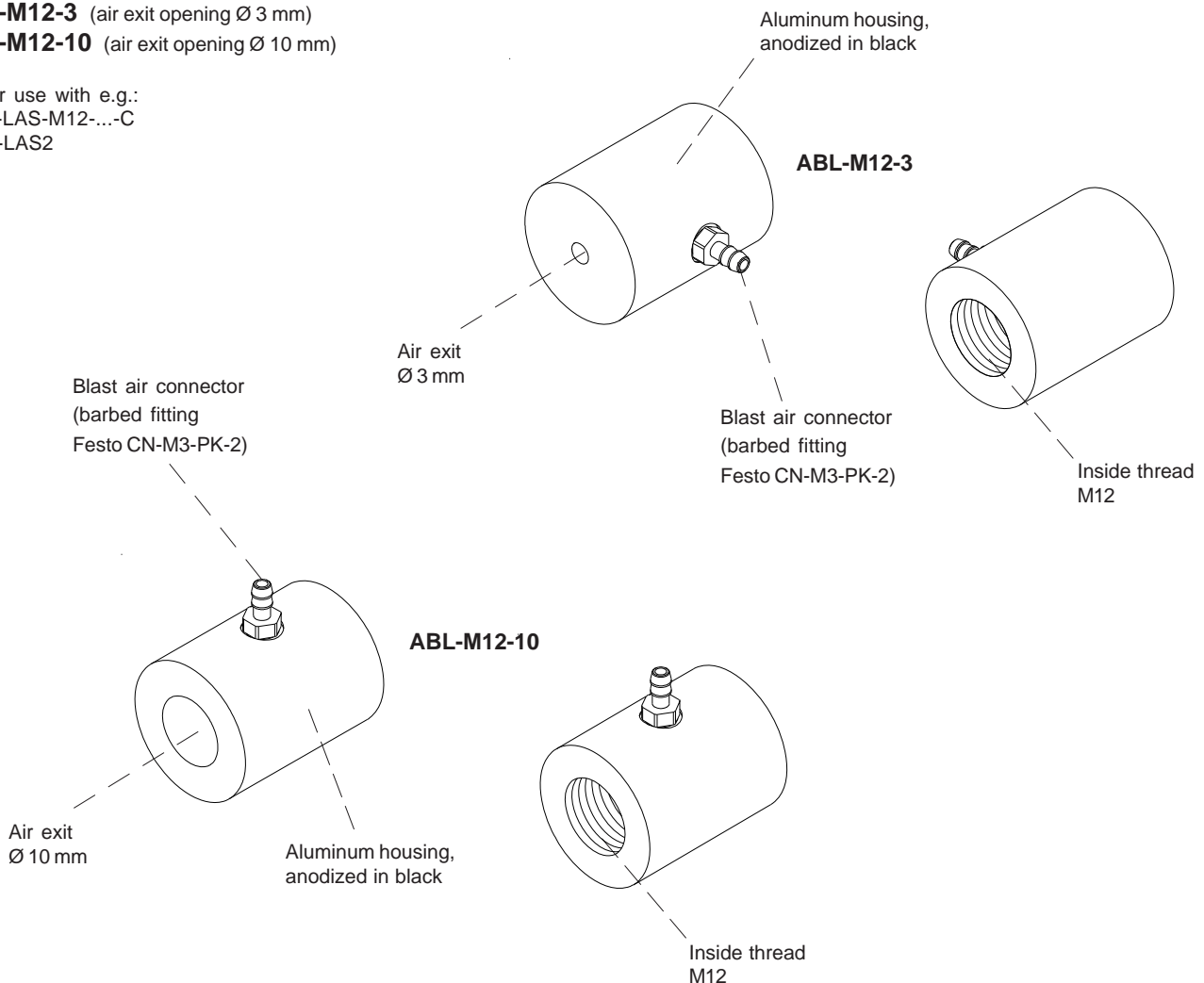
Design

### Product name:

**ABL-M12-3** (air exit opening Ø 3 mm)

**ABL-M12-10** (air exit opening Ø 10 mm)

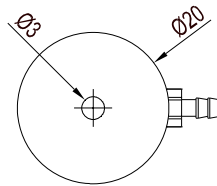
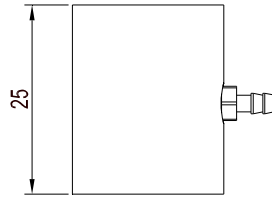
for use with e.g.:  
A-LAS-M12-...-C  
D-LAS2



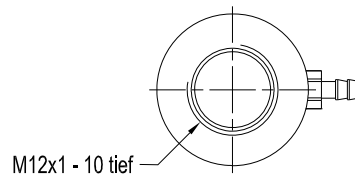
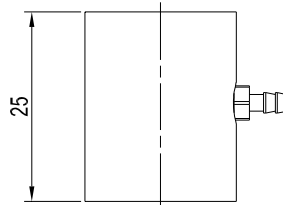
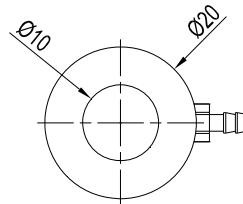


**Dimensions**

**ABL-M12-3**



**ABL-M12-10**



(All dimensions in mm)