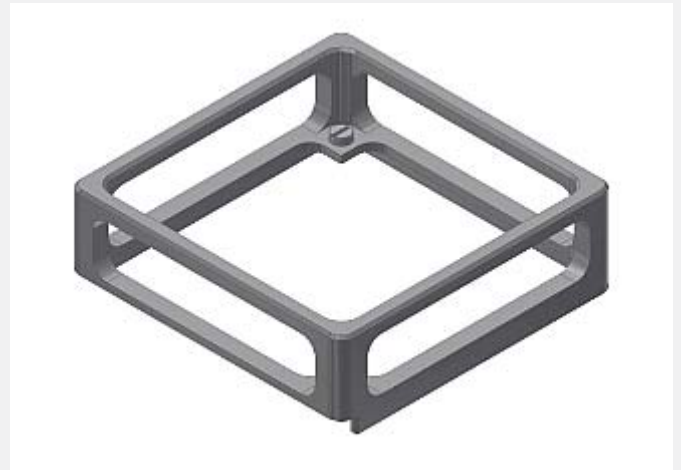


Accessories

▶ SPECTRO-3-28-45°/0°-OFL

Spacer (offline unit)
suitable for use with color sensors of type
SPECTRO-3-28-45°/0°-CL
SPECTRO-3-28-45°/0°-WWB
SPECTRO-3-28-45°/0°-MSM-ANA-DL
SPECTRO-3-28-45°/0°-MSM-ANA-VIS
SPECTRO-3-28-45°/0°-MSM-DIG-VIS

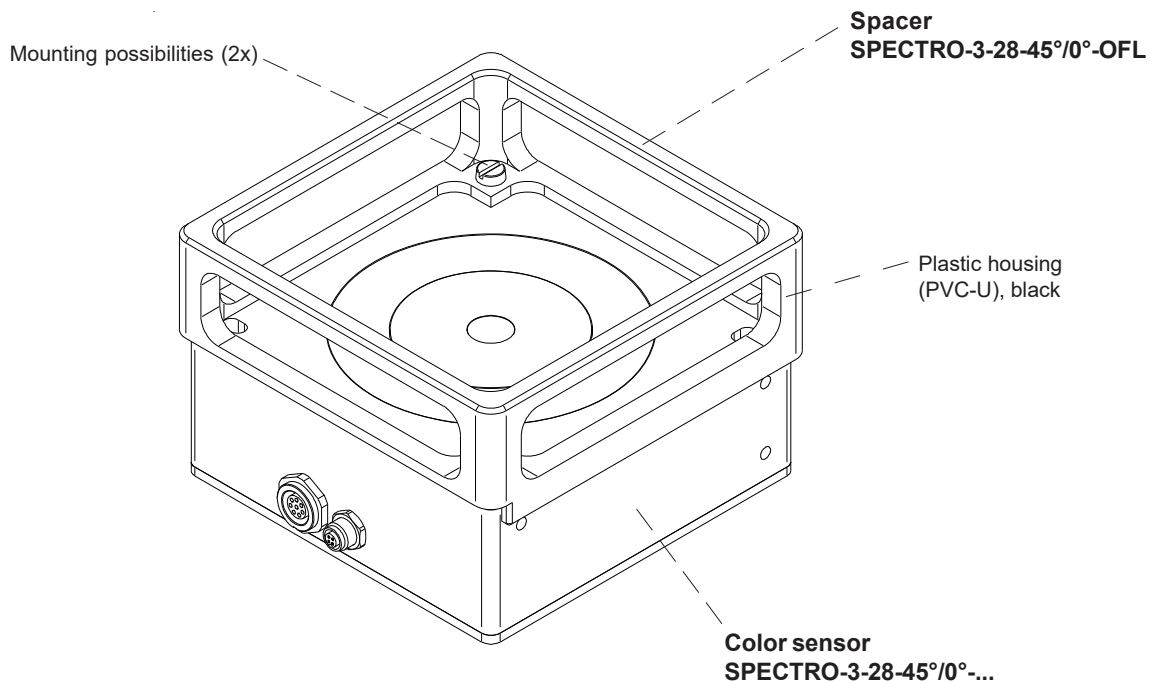
- Makes it possible to use SPECTRO-3-28-45°/0°-... color sensors as a hand-held
- Reference distance 28 mm to measuring object by direct contact
- Sturdy housing (PVC-U)



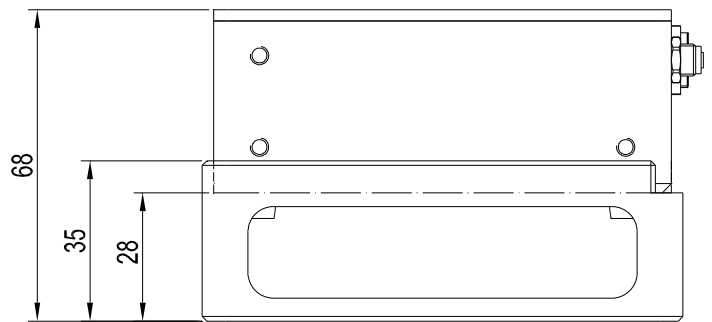
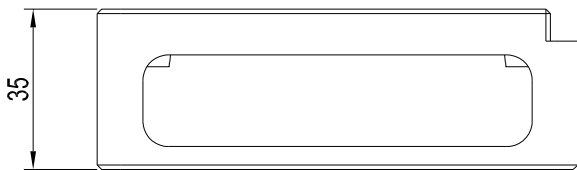
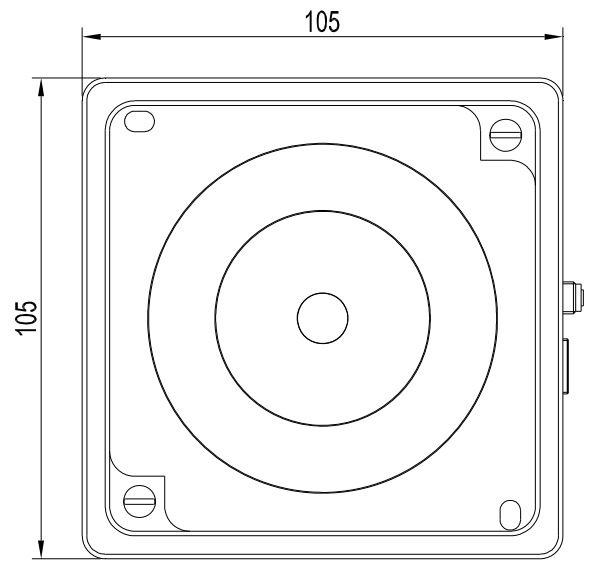
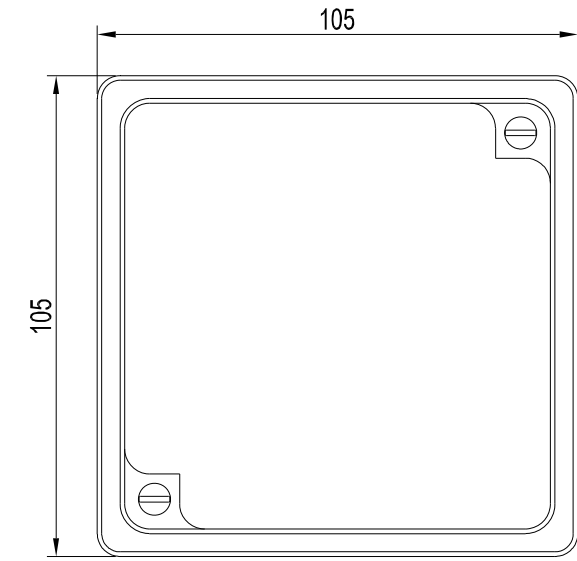
Design

Product name:

SPECTRO-3-28-45°/0°-OFL (Spacer)



Dimensions



(All dimensions in mm)

