

FIO Serie (Zubehör)

► MOUNT-KL-D30-VA

Montagevorrichtung für eine
Lichtleiter-Farbmesssonde
Typ KL-PLNG-BL-A3.0

- Vorrichtung zur Montage einer Lichtleitersonde Typ KL-PLNG-BL-A3.0 vor Ort (z.B. in der Kunststoffindustrie)
- Rohrlängen je 500mm
- Variable Arretierung des Auslegers
- Diverse Befestigungsmöglichkeiten
- Alle Komponenten aus Edelstahl (VA bzw. V2A)

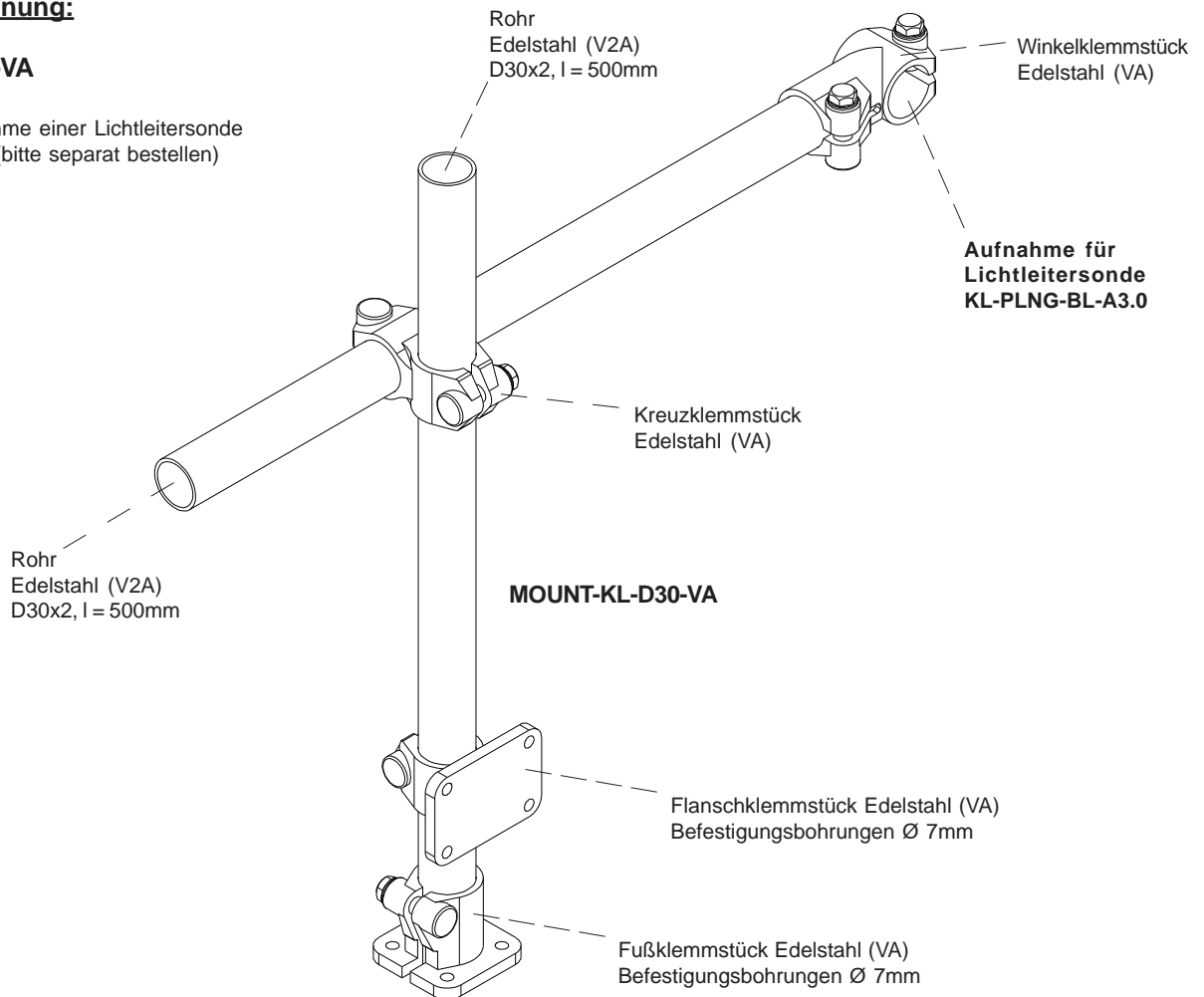


Aufbau

Produktbezeichnung:

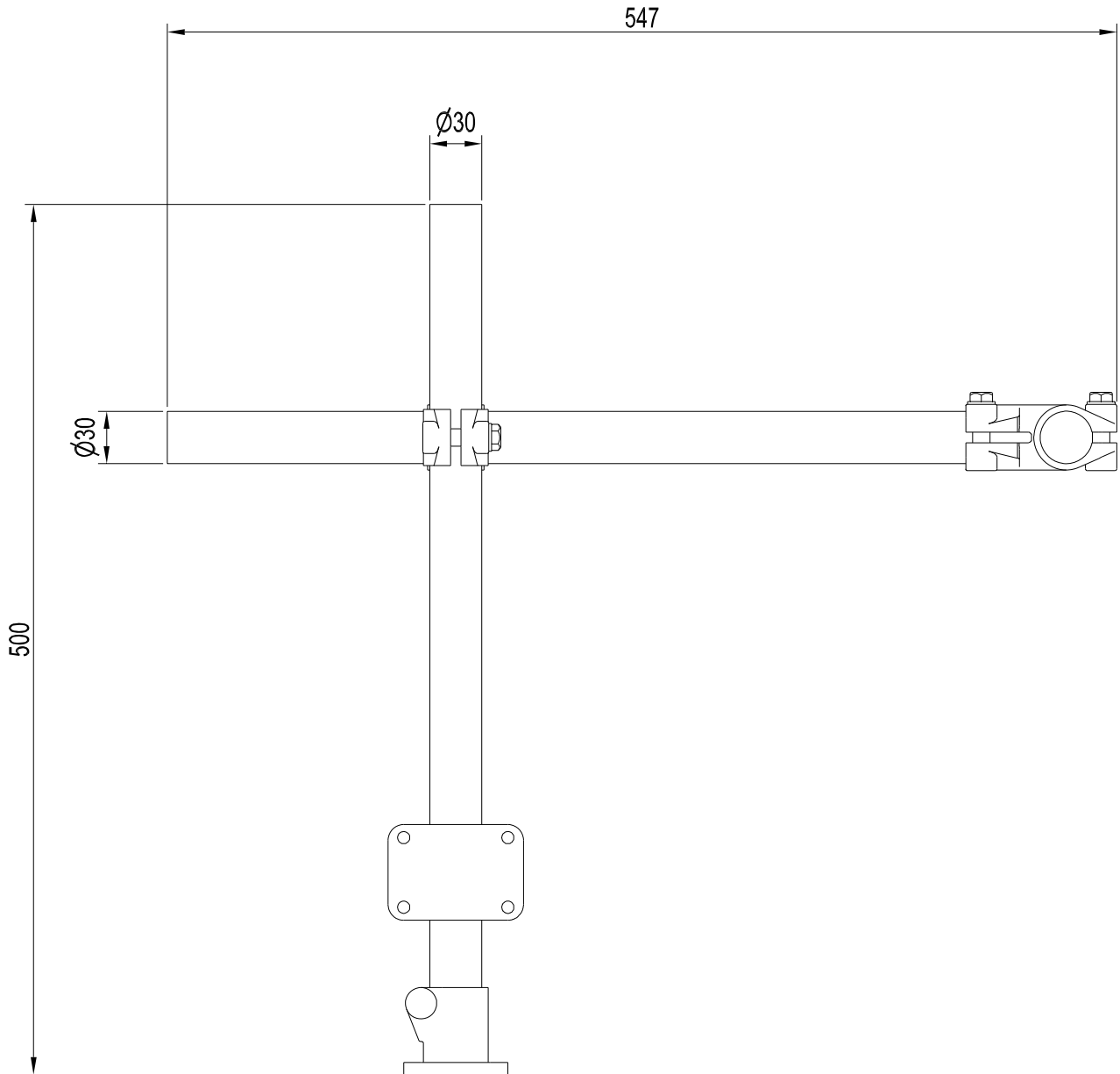
MOUNT-KL-D30-VA

Geeignet zur Aufnahme einer Lichtleitersonde
KL-PLNG-BL-A3.0 (bitte separat bestellen)



Abmessungen

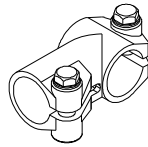
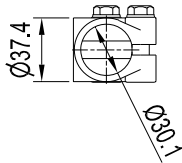
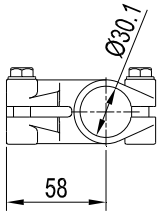
MOUNT-KL-D30-VA



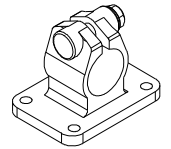
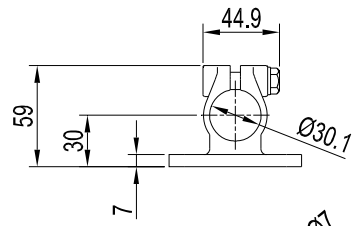
Alle Abmessungen in mm

Abmessungen

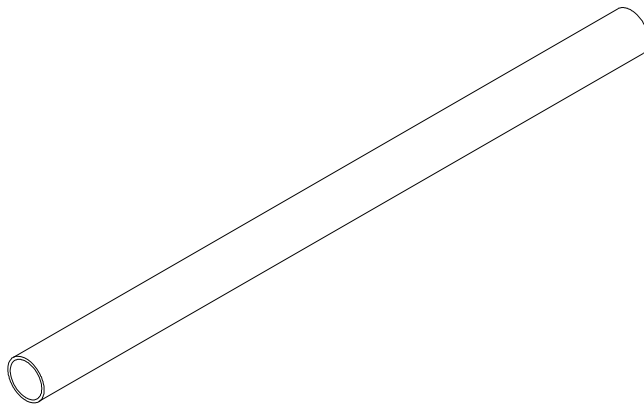
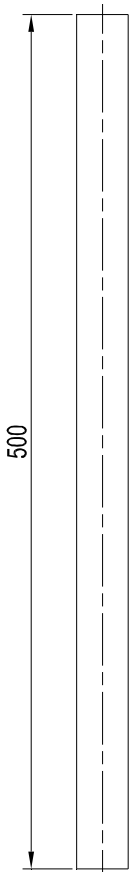
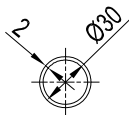
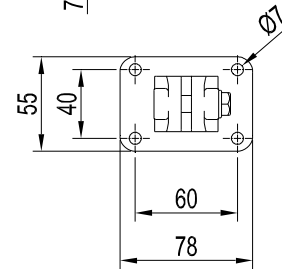
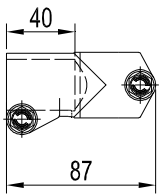
Bestandteile der MOUNT-KL-D30-VA:



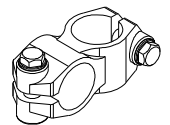
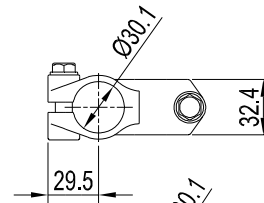
Winkelklemmstück
Edelstahl (VA)
W 30



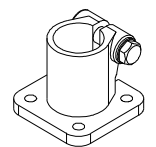
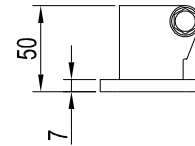
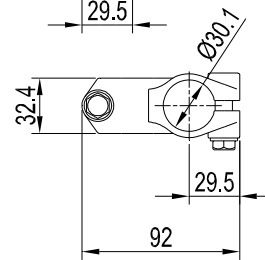
Flanschklemmstück
Edelstahl (VA)
FK 30



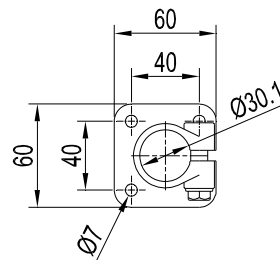
Rohr
Edelstahl (V2A)
D30x2, l=500



Kreuzklemmstück
Edelstahl (VA)
K 30



Fußklemmstück
Edelstahl (VA)
FS 30



Alle Abmessungen in mm



Montageskizze

MOUNT-KL-D30-VA
mit KL-PLNG-BL-A3.0

