

FIA Series

► FIA-P-06-...

- Integrated electronics
- Infrared light beam (IR LED 905 nm)
- Switching state indicator (yellow LED)
- Switching frequency typ. 1 kHz
- Scratch-resistant optics
- 4-pole M8-connector
- Sturdy aluminum housing
- Compact design



Design

Product name:

FIA-P-06-(aperture)-(fork size)-IR

Available apertures:

- d0.4** (circular aperture \varnothing 0.4 mm)
- d0.6** (circular aperture \varnothing 0.6 mm)
- d0.8** (circular aperture \varnothing 0.8 mm)
- d1.0** (circular aperture \varnothing 1.0 mm)
- d1.2** (circular aperture \varnothing 1.2 mm)

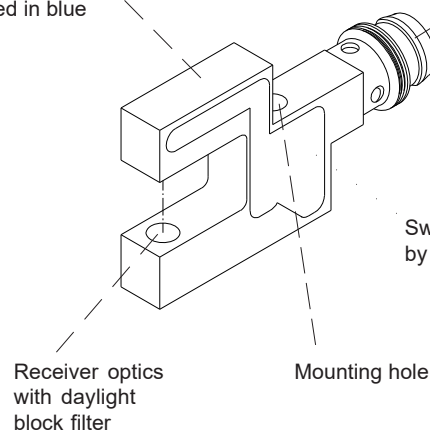
Available fork sizes: (cf. dimensions page 3)

- 5/10** (fork width A=5 mm, fork depth B=10 mm)
- 10/10** (fork width A=10 mm, fork depth B=10 mm)
- 10/15** (fork width A=10 mm, fork depth B=15 mm)

Aluminum housing,
anodized in blue

4-pol. M8-connector

Connecting cable:
cab-M8/4-...



Switching state indication
by means of a yellow LED

Receiver optics
with daylight
block filter

Mounting hole

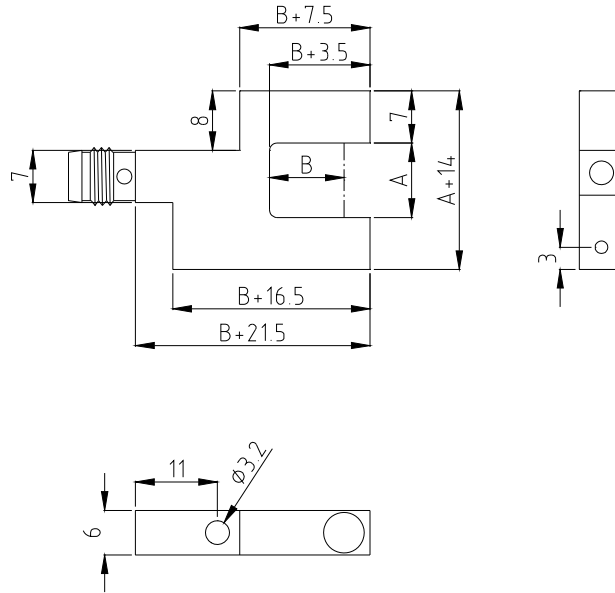

Technical Data

Type	FIA-P-06-...
Transmitter	IR LED: 905 nm
Min. detectable object	typ. 0.3 mm
Reproducibility	typ. 0.05 mm
Optical filter	Daylight block filter
Voltage supply	+24VDC ($\pm 10\%$), reverse polarity protected
Ambient light	up to 5000 Lux
Current consumption	typ. 30 mA
Aperture size	Circular apertures $\varnothing 0.4$ mm / $\varnothing 0.6$ mm / $\varnothing 0.8$ mm / $\varnothing 1.0$ mm / $\varnothing 1.2$ mm
Switching output	Q = pnp bright-switching (pnp n.c.) / npn dark-switching (nnp n.o.) Qinv = pnp dark-switching (pnp n.o.) / npn bright-switching (nnp n.c.) 100mA, short-circuit protection
Enclosure rating	IP67
Operating temperature range	-20°C ... +50°C
Storage temperature range	-20°C ... +85°C
Housing	Aluminum, anodized in blue
Dimensions	see page 3
Connector type	4-pole M8-connector
EMC test acc. to	DIN EN 60947-5-2
Switching frequency	typ. 1 kHz
Switching state indicator	by means of a yellow LED integrated in the sensor housing: LED on = sensor free LED off = sensor covered

Dimensions

FIA-P-06-...-(fork size)-...:

Fork size	dim. A	dim. B
5/10	5 mm	10 mm
10/10	10 mm	10 mm
10/15	10 mm	15 mm



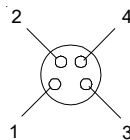
(All dimensions in mm)

Connector Assignment

Pin assignment FIA-P-06:

(4-pin M8-connector)

Pin:	Assignment:
1	+Ub (+24VDC ± 10%)
2	Qinv (pnp dark-switching, npn bright-switching)
3	0V (GND)
4	Q (pnp bright-switching, npn dark-switching)



Available connecting cables:

- cab-M8/4-g-2** (l=2m)
- cab-M8/4-g-5** (l=5m)
- cab-M8/4-w-2** (angle type, l=2m)
- cab-M8/4-w-5** (angle type, l=5m)

